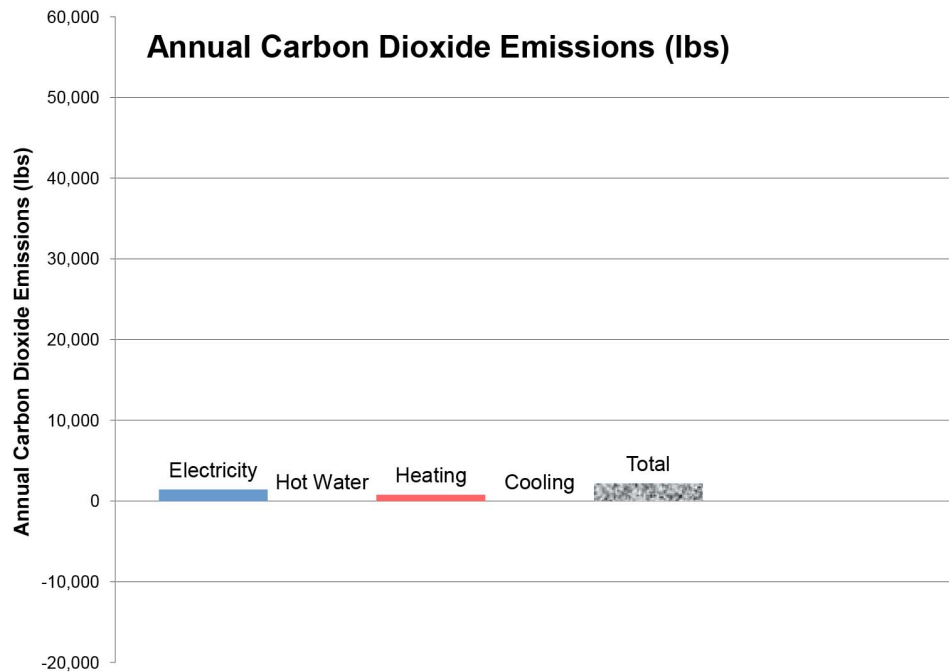


CASE STUDIES



LOGAN WIGGINS RESIDENCE

2565 sq. ft. (2000 sq. ft. above ground, 565 sq. ft. basement)

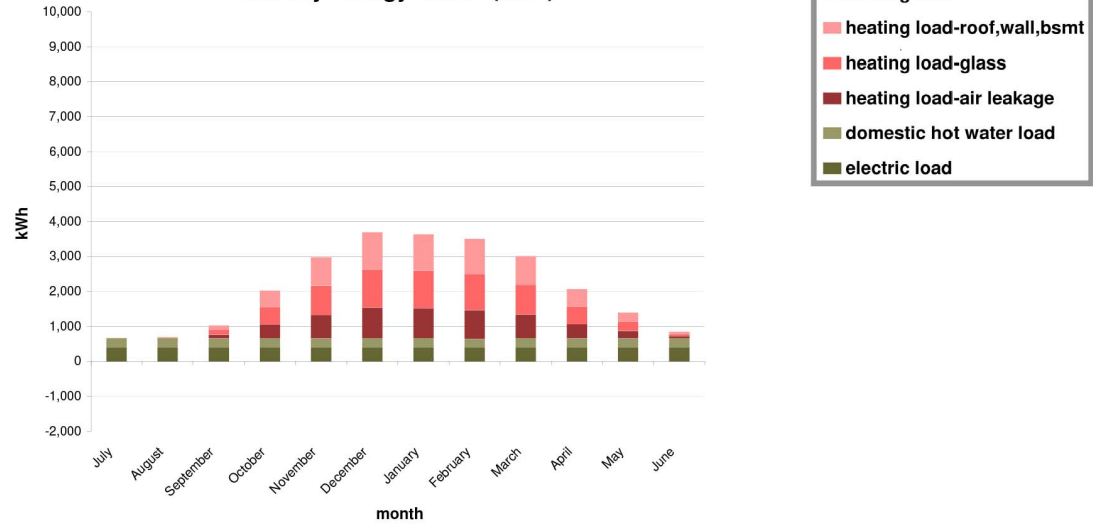


The Logan-Wiggins Residence is a classic passive-solar house. The adobe brick walls absorb the sun's rays during the daytime and radiate heat during the night. Heat Mirror windows and dry-blown cellulose insulation in the roof and walls keep in the heat. Four 4'x10' solar hot water panels provide domestic hot water and supply the radiant floor heating system, which is backed up by an electric boiler. Electric loads are supplied by a 2.8 kW photovoltaic system on the roof. Daylighting through the large clerestory windows reduces the need for electric lighting.

ENERGY SUMMARY

LOGAN WIGGINS RESIDENCE

Monthly Energy Loads (kWh)



Monthly Energy Sources (kWh)

